



————— 2 & 3 BHK PREMIUM APARTMENTS —————

A Project By : Jay Sahajramani



*Experience the beauty
of luxurious life*

"The Sky" a project by Shiv-Om Realtor is the first skyscraper tower of its kind in Dixit Nagar locality of North Nagpur consisting of 2 BHK / 3 BHK residential flats. It promises to provide a standard of luxurious living in modern style with world class amenities in a beautifully crafted manner. It's our intention to provide unique residential premises with utmost customer satisfaction having reflection of engineering and architectural excellence. We at Shiv-Om Realtor deserve to be placed as the most trusted name in our field. It's a landmark apartment that you can call "Home".



THE SKY
A place like heaven



THE SKY
By Shivom Realtors



THE SKY

A place like heaven

AMENITIES



INDOOR GYM



YOGA CENTER



INDOOR PLAY AREA



KIDS PLAY AREA



MULTIPURPOSE HALL



OPEN TERRACE GARDEN



PROVISION FOR FIRE FIGHTING

FACILITIES



TEMPLE



CCTV SURVEILLANCE



DESIGNER ENTRANCE LOBBY



MODULAR KITCHEN



24 X 7 WATER SUPPLY



LIFT & COMMON AREA WITH POWER BACK-UP



DESIGNER DOORS



GRAND ENTRANCE GATE



MECHANICAL PARKING



RAIN WATER HARVESTING





INDOOR GYM



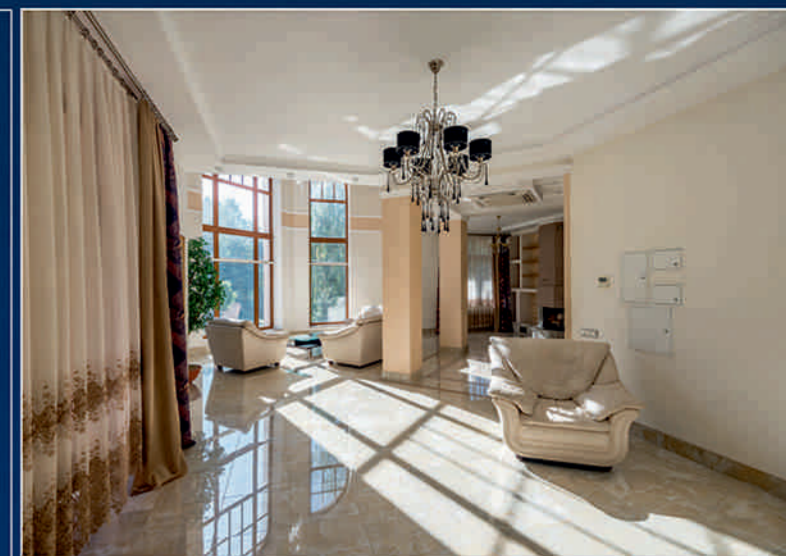
YOGA CENTRE

THE SKY

A place like heaven

AMENITIES & FACILITIES

Your family deserve the best



MULTI PURPOSE HALL



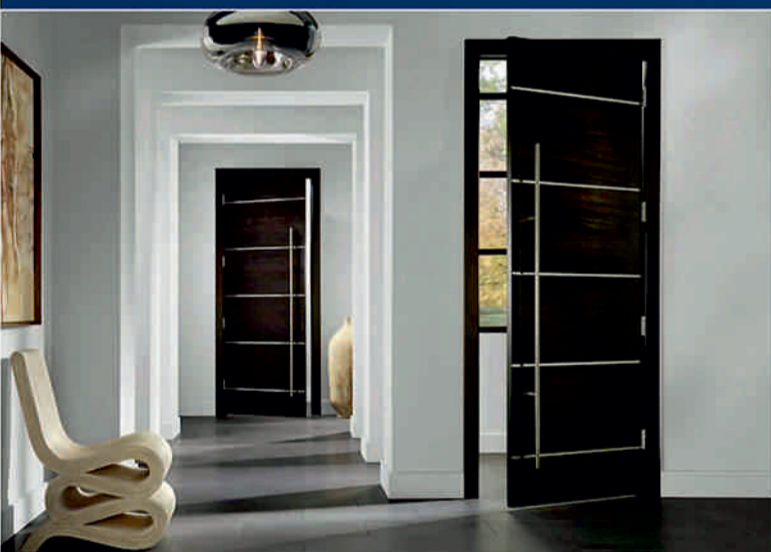
INDOOR GAMES



KIDS PLAY AREA



PREMISES SECURE WITH CCTV CAMERA



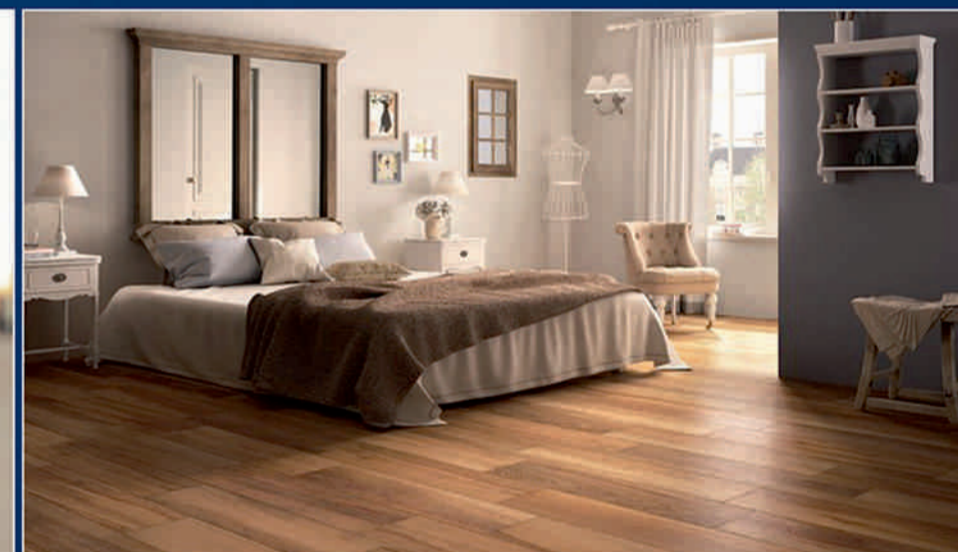
MULTI-LOCKING DESIGNER MAIN DOOR



MODULAR KITCHEN



JAQUAR OR EQUIVALENT BATH FITTING



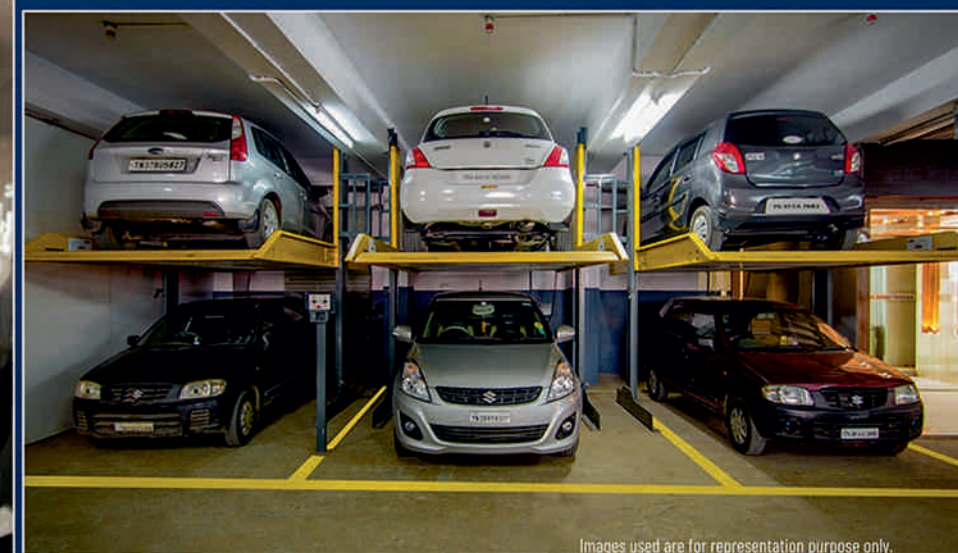
WOODEN TILES FLOORING IN MASTER BED ROOM



POP IN LIVING ROOM



2 BRANDED LIFTS WITH POWER BACK-UP



MECHANICAL PARKING

Images used are for representation purpose only.



2 & 3 BHK LUXURIOUS FLATS

*Experience luxurious life
in the first highrise apartment
at Dixit Nagar*



THE SKY

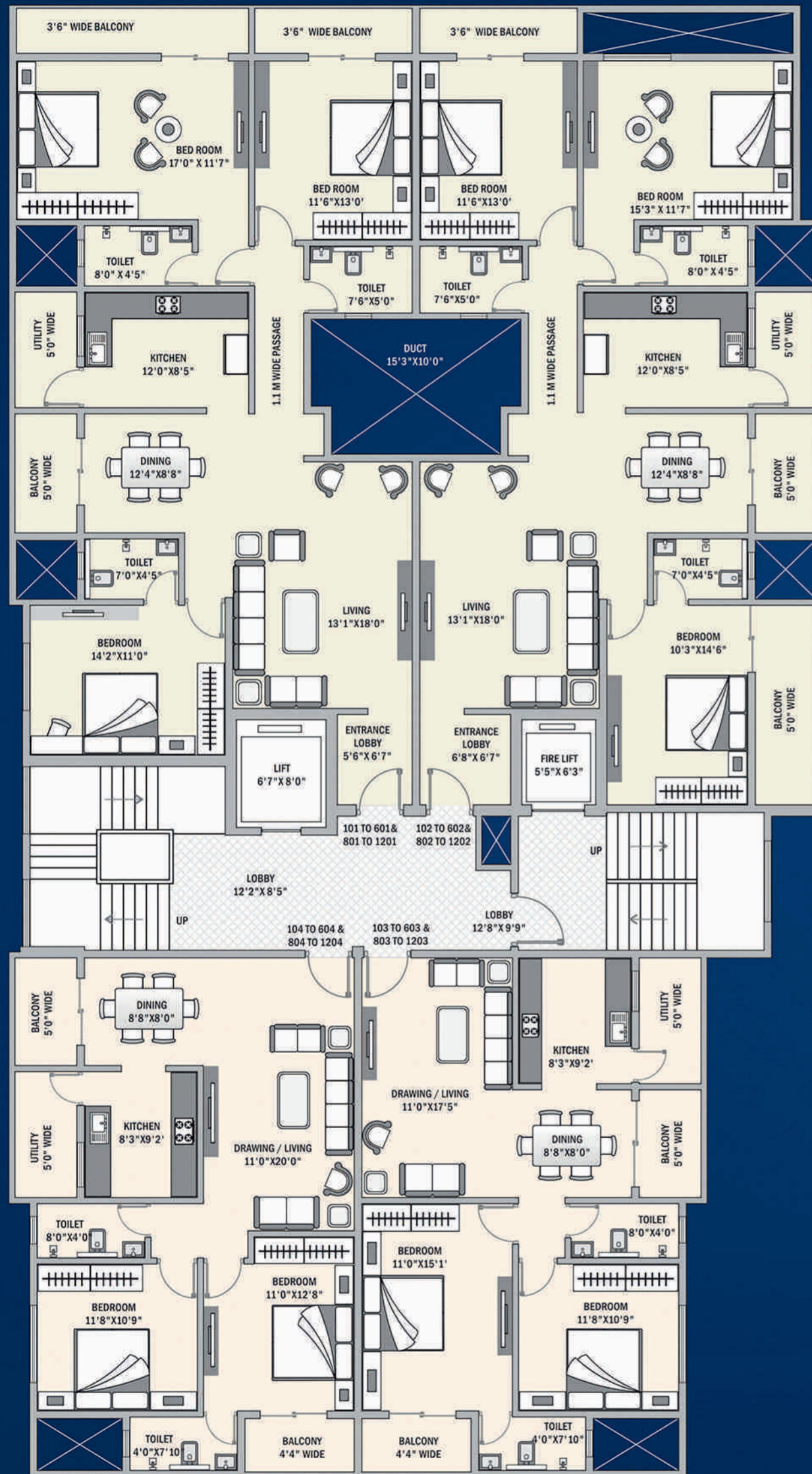
A place like heaven



THE SKY
By Skyom Realtors



FLOOR PLAN DETAILS



TYPICAL 1ST TO 6TH AND 8TH TO 12TH FLOOR PLAN



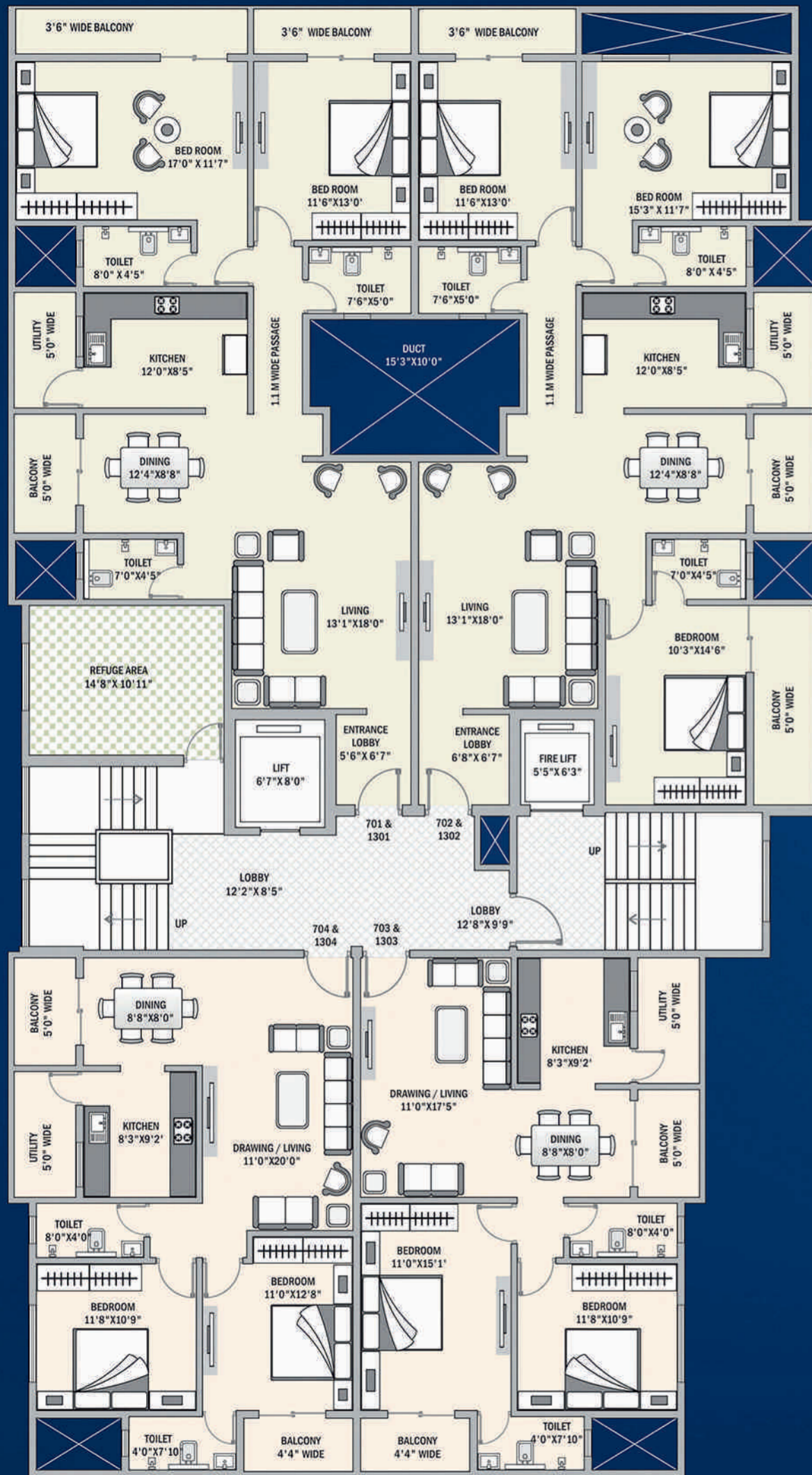
ISOMETRIC VIEW

2 BHK FLAT



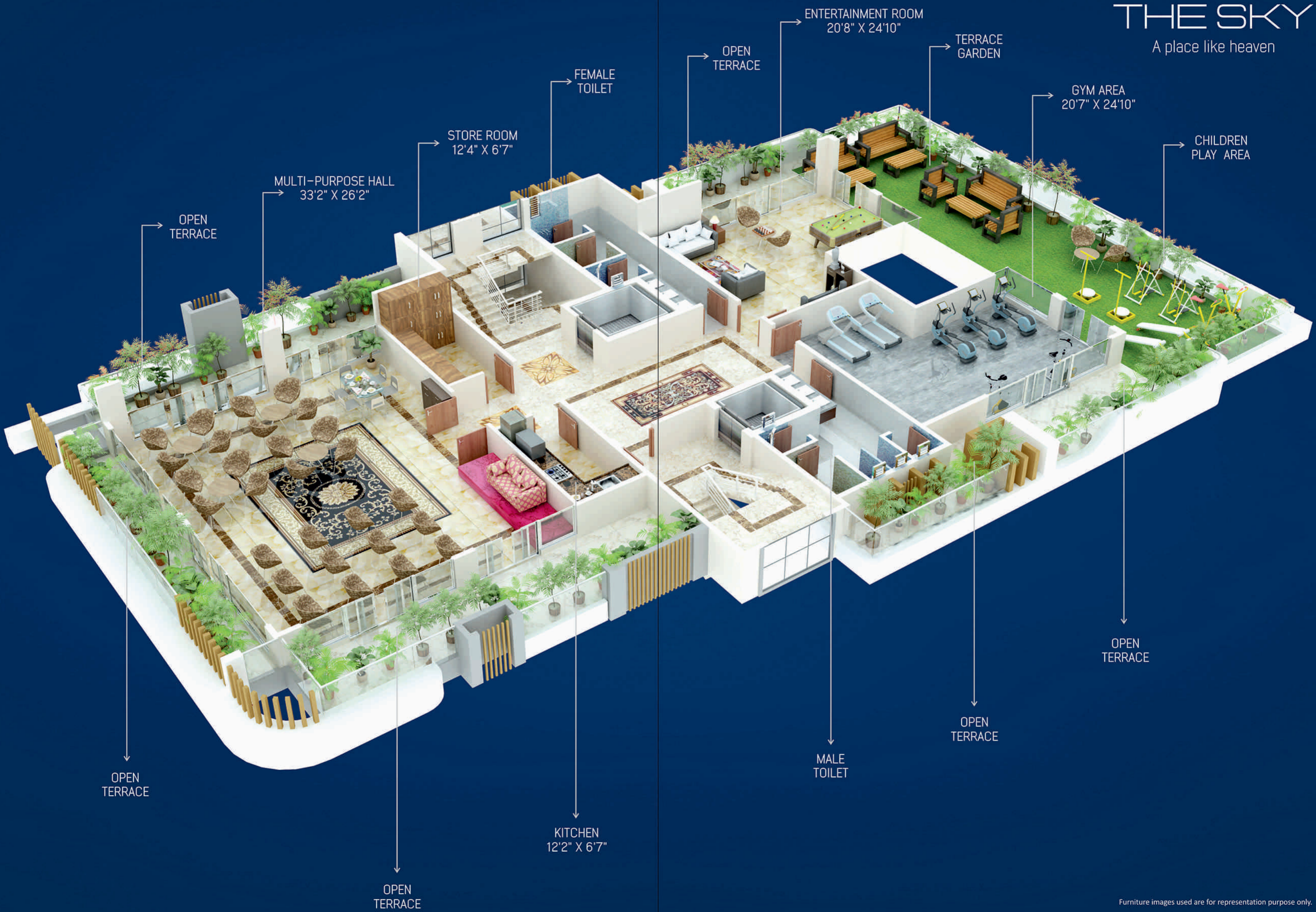
Furniture images used are for representation purpose only.

3 BHK FLAT



TYPICAL 7TH & 13TH FLOOR PLAN







GROUND FLOOR PLAN



SPECIFICATIONS

- **STRUCTURE**
RCC frame structure.
- **WALLS**
External walls : 150 mm thick.
Internal walls : 115 mm thick.
- **PAINTING**
Exterior : Weather shield emulsion paint.
Interior : Smooth finish with plastic emulsion paint.
- **DOORS**
Main door : Teakwood frame and teakwood shutter.
Other doors : Moulded flush doors with teakwood frames.
- **WINDOWS**
Powder coated aluminum sliding windows with M.S. grill.
- **FLOORING**
Complete vitrified tiles flooring.
Balconies /utility area : anti-skid tiles.
Kitchen : vitrified /anti-skid tiles.
Toilets : anti-skid tiles.
- **KITCHEN**
Granite top kitchen otta with stainless steel sink and glazed ceramic tiles upto 2.0 ft. height above otta.
- **SANITARYWARE**
Jaquar / Simpolo / RAK or equivalent.
- **FITTINGS**
Jaquar or equivalent.
- **WALL CLADDING**
Tiles upto 7.0 ft. height.
- **ELECTRIFICATION**
Modular switches of legrand or equivalent.
TV point , invertor point and A.C. Point in living room.
- **INTERCOM**
Intercom facility available.
- **BACK-UP**
Electricity back-up for lift, staircase and common parking areas.
- **WATER**
NMC water supply and bore-well.
- **NOTE**
 - Extra charges for M.S.E.B. Network, water meter, Stamp duty & registration.
 - Extra work will be done with extra payment in advance.
 - GST and other taxes will be borne by the purchaser as applicable.
 - Possession after full clearance of all dues.

PRIME LOCATION PLAN



Site : Plot No. A, Dixit Nagar, Nari Road, Nagpur.

ARCHITECT

EMANATE DESIGN

Ar. Lokesh Kadu

Ar. Mansi Sahajramani

STRUCTURAL CONSULTANT

P. S. Patankar & Associates

INTERIOR DESIGNER

Anamika Sahajramani

LEGAL CONSULTANT

Om Hariramani & Associates

PROMOTERS

Nishit Sahajramani : +91 9595 955 590

Akshay Sahajramani : +91 8888 222 265

Yogesh Sahajramani : +91 9326 515 757

A Project By

Shiv Om̄
REALTORS

R.S.V.P.

National Bricks Co.

Plot No. 320, Kamgar Nagar, Jaripatka Ring Road Nagpur, (M.S) India. _____



MAHA RERA REGISTRATION NO.

P50500034570

<http://maharera.mahaonline.gov.in>